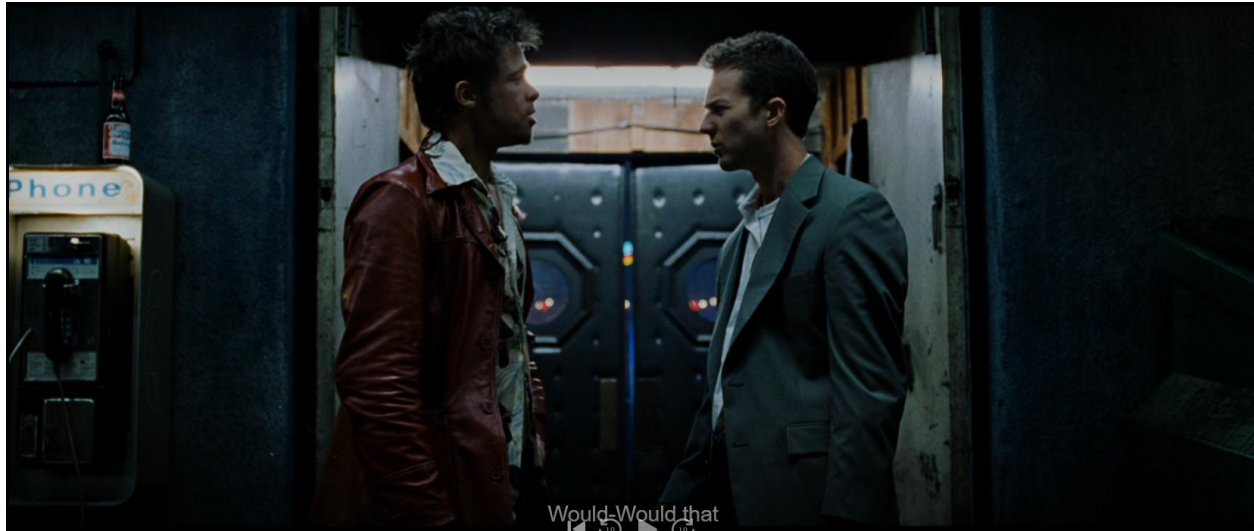




### Act 1

This is a wide, high angle, dirty crowd shot, wide lens. Taken place within an office that has very geometrical shapes. The director included this great shot into the movie because this shot does a great job of very quickly and easily describing the type of life the main character lives. He made an effort to have this wide show to show that the entire office is nothing special and it's incredibly boring with no interesting shapes on any part of the screen. Along with having the high angle to showcase the maze that is the cubicle that one feels they can feel lost and trapped in.



## Act 2

Cowboy shot, Clean 2 shot, Low angle, 40-50mm lens, using shapes within a frame to position the two characters in front of the entrance being divided by the middle and framed by the lines on the sides. This shot is a very simple but effective shot displaying conflict between characters, the lighting used here creates a nice barrier to further help feel like these characters are alone. And the director's choice to do this with both the lens and framing really helps with that.



Act 2

Full, Dirty 2 shot, over the shoulder, eye level, ~30mm, The director had picked this layout for the shot since the previous one had the background character covered by the foreground character's head. Even before this, the shot had been of the character's love interest. But this shot emphasized how these 3 characters were never in the same room at the same time. This also isn't the first time this kitchen had been displayed but it is consistent with all other scenes with the mess being laid out.



Act 2

Insert, High angle, ~50mm

Director included this shot to keep this scene very frantic, chaotic, and fast paced. This shot only lasts a second, maybe less, and yet we still get more than enough information as to what is happening. Along with having the other character wearing black gloves in order to better differentiate our characters and get instant clarity for the split moment we see this scene. We can also see that the shutter speed is not incredibly fast as we see some decent motion blur but this is also what the director intended to help further convey the chaos of this scene.



Act 2

Dutch tilt, close up, dirty single, with maybe a 30-40mm lens, with a low aperture.

This very quick shot in the scene gives the impact of something going incredibly wrong, focusing in on this one side character wincing gives us a very concerned feeling along with the uncertainty of what's going to happen given the dutch tilt. The director wanted to single out this specific character despite him not being a main character because he wanted to emphasize that everyone around the main character thinks what he is doing is horribly wrong. If it had to summarize this shot in a word I'd say it's unnerving.



### Act 3

Wide shot, Double, Low angle shot

The director decided that this is the moment our character realizes the twist that he is also the second main character. He places the characters yet again at opposite sides. This shot conveys a sense of sense, and understanding. The frame is very still, low to the ground, and low angle. Giving a sense of being grounded.



### Act 3

Wide shot, Low angle

Yet again we see the use of shapes within a frame, and we see these two characters in their own sections, but still holding each other's hand. The meaning behind this is to note that they are separated but together, which is kind of contradictory, but it works. This scene is a quite long, and still one. But it's fitting since the meaning behind that is that there is nothing left to be done, they cannot stop what was about to happen.